



Where are you headed?

New!
2004
Edition

Masters Courses in Transport Planning

Your guide to postgraduate training opportunities, putting you on track to a stimulating, rewarding and challenging career in **Transport Planning**. This is an area in which employers are keenly seeking graduates with the right qualifications, because of the serious skills shortage.

See inside for:

- Career case histories
- Sources of funding (p 4)
- Course listings (pp 5-6)
- Contact details for further information (Back cover)

What transport planners do?

Transport today gets a bad press but is in fact vital to modern life. As a **transport planner**, you could be solving some of the most pressing problems facing our society, taking advantage of new technology to find innovative solutions, combining sensitivity to the environment with robust analysis of the effects of alternative actions. The skills shortage means that employers are offering attractive starting salaries of around £20,000 to suitable graduates, with a premium of £3,000 for holders of a Masters degree.

A wide variety of jobs is now open to transport planners, as the case studies show. You could be working for:

- central or local government,
- a public transport company,
- a specialized consultancy or
- other transport related organisations (railway companies, airports, seaports, logistics or freight.)

You could be involved in developing new policies to deal with congestion, or promoting integrated transport, or developing innovative projects to improve urban transport or providing for the mobility of people with special needs, to list but a few of the exciting opportunities now opening up.

Case Study

Amy's interest in transport issues developed in her final year of a BA (Hons) geography course at Portsmouth University. Wanting to get more involved in the growing debate in transport and travel, she undertook the one year MSc course in Transport Planning and Engineering at Southampton University.

In 1998, Amy joined the Transportation Section of WSP at its Basingstoke office as a graduate transport planner. The Transportation team works for public sector clients and Amy was involved in a wide range of projects for local authorities as well as the Highways Agency.

Two years later, Amy moved to Hampshire County Council as a Senior Transport Planner in the expanding Transport Policy team. Her work at the Council has been broad ranging, from working with individual schools to help deliver safer routes to schools schemes, to developing a transport strategy for the rural parishes of western Hampshire as well as working with the Transport Task team of the Hampshire Economic Partnership.

More recently, Amy has been the County Council's workplace travel plans co-ordinator, a Department for Transport funded bursary position. She is working with businesses and developers across the county to raise awareness of transport and travel issues and assist employers and employees in making positive changes to their travel behaviour.



Relevant qualifications

The transport profession today is highly multi-disciplinary. As the policy emphasis has moved away from providing the capacity to meet demand towards finding sustainable solutions to transport problems, the variety of skills demanded of transport planners has widened.

Transport planning teams today are likely to include people with a first degree in geography, mathematics, economics, or a variety of other social and natural science subjects, working alongside the engineers, town planners and traffic modellers traditionally associated with the profession.

And, while technical expertise is still important and valued, other qualities such as the ability to explain proposals, negotiating skills and project management are needed as well. The result is that people with a diversity of first degrees are being welcomed into rewarding careers in transport planning.

Postgraduate courses

To reach the higher levels of the profession, specialised training beyond first degree level is likely to be needed. Some people acquire this through on-the-job training and continuing professional development (CPD). But to get an early foot up, there's still nothing to beat a dedicated Master's course. It will gain you professional qualification exemptions too.

The good news is that there is an excellent range of courses to choose from: See the tables on pages 5 and 6.

The aim of courses at this level is to equip students with both knowledge of the subject matter and *specific skills* relevant to practising in the transport profession. Accordingly, courses are divided into core topics with a range of further options providing plenty of choice for students to study topics that particularly appeal to them. In most cases, you will also have the opportunity to demonstrate your new skills through a substantial piece of project work or a dissertation.

Course options vary between universities but may include: Transport and the environment; Understanding and modelling travel behaviour; Application of GIS; Public transport; Transport safety; Planning for non-motor transport; Transport in developing countries; and Transport telematics.

Where are you headed?

Costs

- The cost of a Masters course will depend on the period over which it is taken as well as the university you choose.
- For a **one year full time course**, for a student from the UK or other EU country, the fees will typically be around £3,000 (fees are likely to be significantly higher for non-EU students).
- In addition, you will need to make provision for accommodation, living expenses and incidental costs while you are taking the course.
- Fuller information on fees and other costs will be available from the university of your choice.

Many Masters courses are also offered on a **part time** basis, typically over 2 or 3 years but in some cases up to 5 years or longer. This option is attractive to those already in employment who are seeking to improve their qualifications. A number of employers recognize the value of Masters courses by encouraging promising recruits to enroll on a part time basis, when some or all of the fees may be met by the employer.

Funding

As with all postgraduate training, **funding** is a major consideration for most students. However, you may qualify for financial support from one of the following sources:

- **Engineering and Physical Sciences Research Council (EPSRC):** A number of bursaries are available through the six universities participating in the EPSRC supported **Transport Partnership**. These cover fees and make a contribution towards living costs.
- **Rees Jeffreys Road Fund:** The Fund offers up to 10 bursaries a year at full EPSRC rates for Masters courses in transport related subjects at any university. Applicants need to have achieved class 2.i or better in their first degree.
- **Employers:** Many leading employers enroll staff on Masters courses, meeting some or all of the costs while continuing to pay a salary.
- **Brian Large Bursary Fund:** This fund provides a number of bursaries to UK students studying for a full time Masters degree in Transport at a UK university. These bursaries are intended to help students who have no other, or only very limited, funding from grants or bursaries.

For all the above, applications should be made through the applicant's chosen university (see back page).



**Where are you
headed?**

EPSRC Transport Partnership

The universities in the Transport Partnership are listed below. Entry requirements are a good first degree (class 2.ii or above) in a relevant subject (eg. Engineering, Physical Sciences, Mathematics, Computing, Statistics, Economics, Environmental Science, Geography, Planning). Equivalent professional experience will also be considered.

IMPERIAL COLLEGE / UNIVERSITY COLLEGE (UNIVERSITY OF LONDON CENTRE FOR TRANSPORT STUDIES)

MSc Transport
MSc Transport with Business Management
MSc Transport with Sustainable Development
Format: Full time (1 yr) or Part time (2-3 yrs)

LEEDS (INSTITUTE FOR TRANSPORT STUDIES)

MSc (Eng) Transport Planning and Engineering
MSc Transport Planning
MSc Transport Planning Practice
MSc Transport Planning and Environment
MA Transport Economics
MA Transport Economics (Research)
Format: Full time (1 yr) or Part time (2-3 yrs)

NAPIER (EDINBURGH)

MSc. Transport Planning & Engineering
Format: Full time (1 yr) or Part time (3 yrs); also
Distance Learning

NEWCASTLE upon TYNE

MSc. Transport Engineering & Operations
MSc. Transport & Business Management
MSc. Transport Planning & Policy
Format: Full time (1 yr) or Part time (2-5 yrs)

SOUTHAMPTON

MSc. Transportation Planning & Engineering
Format: Full time (1 yr) or Part time (2-4 yrs)

WESTMINSTER

MSc. Transport Planning & Management
Format: Full time (1 yr) or Part time (2-3 yrs)
MSc. European Logistics, Transport &
Distribution
Format: Full time (1 yr) with Dutch/Norwegian
partners

Other Universities

BIRMINGHAM

MSc. Road Management
Entry requirements: Good first degree
Format: Full time (1 yr) or Part time, interrupted full time

CARDIFF

MSc. Transport & Planning
Entry requirements: 1st or 2nd class honours in relevant subject; mature students with relevant professional background.
Format: Full time (1 yr)

CRANFIELD

MSc. Logistics & Supply Chain Management
Entry requirements: 1st or 2nd class UK honours, or equivalent
Format: Full time (1 yr) or Part time (2 yrs); Modular (2 yrs)

INSTITUTE OF LOGISTICS & TRANSPORT / ASTON

MSc. Passenger Transport Management
MSc. Logistics
Entry requirements: Good honours degree or equivalent professional experience
Format: Distance Learning

LOUGHBOROUGH

MSc. Airport Planning & Management
Entry requirements: Suitable first degree (eg. Transport, geography, economics, aeronautical engineering)
Format: Full time (1 yr) or Part time (2-8 yrs)

NOTTINGHAM TRENT

MSc. European Traffic & Transportation
Entry requirements: Degree or HND/C with experience
Format: Part time Distance Learning (3 yrs)

OXFORD BROOKES

MSc. Transport Planning
MSc. Urban Planning (Transport)
Entry requirements: Degree in relevant subject, usually class 2.i
Format: Full time (1 yr) or Part time (2 yrs); Urban Planning 2 or 4 yrs

SALFORD

MSc/PG Dip. Transport Engineering & Planning
Entry requirements: Honours degree or equivalent qualifications and experience
Format: Full time (1 yr) or Part time day release (2 yrs + dissertation)

SHEFFIELD HALLAM

MSc. Transport Planning & Management
MSc. Planning & Transport
Entry requirements: Good first degree or equivalent
Format: Full time (1 yr) or Part time (2 yrs); Planning & Transport Full time (2 yrs)

WEST OF ENGLAND

MSc. Transport Planning
Entry requirements: Honours degree in relevant subject
Format: Full time (1 year) Part time (2 years)

Tim took his Masters degree in Transport Planning & Engineering at Leeds University following a first degree in Mathematics/Physics and two years as a vehicle operations manager for a road haulage company.

Tim then joined consultants Mott MacDonald as a Transport Planning Consultant. This provided him with a practical grounding in many of the essential skills required in the industry, ranging from traffic modelling to dealing with members of the public during consultation and project management. Tim is now working for consultants Steer Davies Gleave where his work is characterised by its diversity. He continues to be involved with freight projects, but is also developing expertise in rural transport and real time passenger information.



Tim Steiner



Ben Still

Ben gained his Masters in Transport Planning and Engineering at the Institute for Transport Studies, University of Leeds following a first degree in Geography at Cambridge.

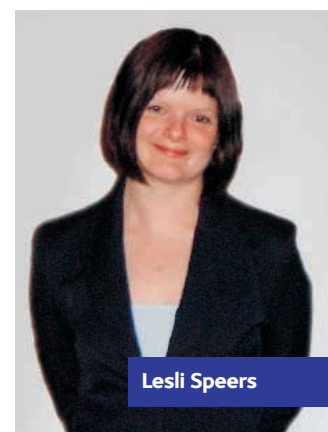
Ben worked in private planning consultancy on projects as diverse as CrossRail in London, the development of a land-use transport model of Sardinia, and a strategic planning model for Greater Manchester. He has also undertaken a PhD examining the use of modelling in policy making, and combined this with teaching and research work at the University of

Leeds. He is now working for the Government's Department for Transport, (DfT) as Head of Strategic Analysis in the Transport Strategy division, involved in, among other things, the review of the 10 Year Plan for Transport, and options for distance charging for lorries.

Lesli gained her MSc in Transport Engineering and Planning at the University of Salford after completing her BSc in Geography at the University of Newcastle upon Tyne. She then joined the Manchester office of RPS Transport as a Graduate Engineer.

Lesli's work with RPS centred on promoting private sector developments through the planning system and included: assessing the impact of the proposed new Stonehenge visitor centre; preparing a Proof of Evidence to oppose the construction of a Motorway Service Area on the M11; assessing the transport and environmental impacts of the proposed John Constable Countryside and Heritage Centre in Essex; the design of an access junction for a large retail outlet in Halifax; and, for added variety, work on the logistics of a cement works in Egypt! Lesli says "No two projects are the same, each having their own individual modelling, assessment and sustainability requirements, allowing me to constantly update my skills and ensuring that boredom doesn't set in."

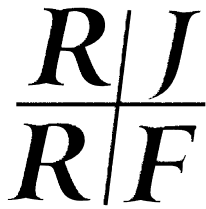
Lesli recently moved to develop her career further with the Building Design Partnership, also in Manchester.



Lesli Speers

Contacts

University	Who to contact	Tel No/Email		Website
Aston/ILT	Jacque Bruce	01536 740124	msc@iolt.org.uk	www.aston.ac.uk
Birmingham	Harry Evdorides	0121 414 3071	h.evdorides@bham.ac.uk	www.bham.ac.uk
Cardiff	Mrs Isabel Sawyer	029 2087 6131	sawyeri@cf.ac.uk	www.cf.ac.uk
Cranfield	Penny Mingay	01234 754068	p.mingay@cranfield.ac.uk	www.cranfield.ac.uk
Leeds (ITS)	Lynn Armistead	0113 343 5331	larmiste@its.leeds.ac.uk	www.its.leeds.ac.uk
Loughborough	Pam Wilson	01509 223401	p.j.wilson1@lboro.ac.uk	www.lboro.ac.uk
Imperial College / University College London	Jackie Sime	020 7594 6100	msc.transport@imperial.ac.uk	www.ulcts.cv. imperial.ac.uk
Napier	Annie Ogletree	0131 455 2477	a.ogletree@napier.ac.uk	www.sbe.napier.ac.uk
Newcastle upon Tyne	Christine Earle-Storey	0191 222 6547	c.m.earle-storey@ncl.ac.uk	www.ncl.ac.uk/torg
Nottingham Trent	Ralph Tonge	0115 848 2048	ralph.tonge@ntu.ac.uk	www.ntu.ac.uk
Oxford Brookes	Janet Kings	01865 484 3424	planning@brookes.ac.uk	www.brookes.ac.uk
Salford	Ralph Henson	0161 295 4498	r.r.henson@salford.ac.uk	www.salford.ac.uk
Sheffield Hallam	Keith McKoy	0114 225 4556	k.g.mckoy@shu.ac.uk	www.shu.ac.uk
Southampton	Dr Nick Hounsell	023 8059 3705	nbh@soton.ac.uk	www.soton.ac.uk
West of England	Graham Parkhurst	0117 3282133	graham.parkhurst@uwe.ac.uk	www.uwe.ac.uk
Westminster	David Whibley (Transport Plg) Michael Browne (Euro Logistics)	020 7911 5073	whibled@wmin.ac.uk m.browne@wmin.ac.uk	www.wmin.ac.uk



Transport Planning Society website: www.tps.org.uk